

Helpman PX 3-7-E

Specifications

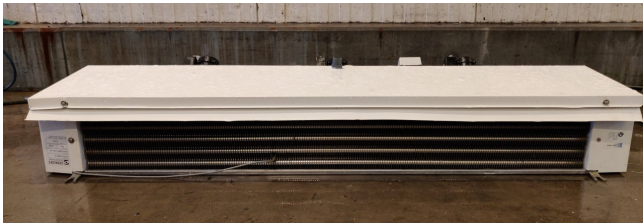
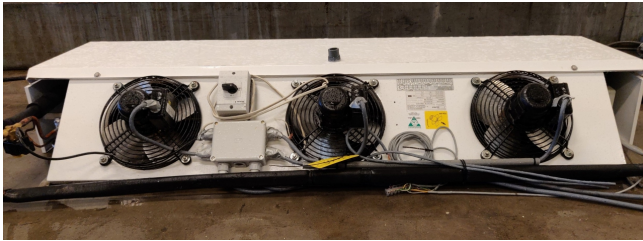
Brand	Helpman
Type	PX 3-7-E
kW	4.5
Refrigerant	Freon
Number of Fans	3
Fin Space in mm	7
Defrosting	Electric
m ³ /h	3000
Remarks	YOB 2003 // fan 0.03 kW and 1255 RPM at 50Hz
Remarks	17.2 m ²
Volume	5.1 dm ³
Weight	50
Stock	1



Description

Used Helpman PX 3-7-E

Used Low height air coolers build by Helpman type PX 3-7-E with 4.5kW and 3000 m³/h, 17.2m² and 5.1dm³. *All components of this used evaporator will be tested on good working, leak free condition (electro engines), coils, bearings) Choosing HOSBV means buying with warranty. We perform a industrial cleaning. Also, we can arrange your shipment.



		Apparatenfabriek Helpman BV Peizerweg 97, 9727 AJ Groningen (NL) Tel. ++31 50 5217555 / Fax ++31 50 5264878 info@helpman.com / www.helpman.com	
Type	EX 3-7-E /230-50-1		
Serial number	518780/05		
Refrigerant	R22/R134a		
Operating temp.	-40/55	°C (min/max)	
Design/test pressure	21	bar	Year 2003
Internal volume	5.1	dm³	
Weight (empty)	50	Kg	

RENDEN VAN DE THERMISCHE BEVEILIGING ERTE FOR MOTORSCHUTZSCHALTER RT VALUES FOR OVERLOAD RELAYS OUR LA SELECTION DU RELAIS DE PROTECTION	t	220-240/50/1			
	°C	30 W		70 W	
		220V	240V	220V	240V
	0	0.48	0.51	1.22	1.30
	120	0.51	0.53	1.27	1.24
	40	0.54	0.58	1.35	1.35
	50 Hz				
	220-240/50/1				
	30 W	90 W	250 W	370 W	160 W

ATB		1~ Mot 56
		7120987-Z
		685915
SRBFT0.09/4-B31 /W11		WSK 130°C
HELPMAN-Nr.: 300801		EN 60034 CB3uF400VDB
Th.Cl. F IP 55		220-240 V 0,51 A
cos φ 0,97		0,03 kW 1255/min 50 Hz
220-254 V 0,50 A		
cos φ 0,97		0,03 kW 1665/min 60 Hz
		1~

Capaciteiten & Technische gegevens

Capaciteiten R404A / R507A (kW)						Ventilatoren						
Koeler-model	Berijpt $t_p = -8^\circ\text{C}$ $DT = 8\text{K}$	Droog $t_p = -8^\circ\text{C}$ $DT = 8\text{K}$	Lucht- hoev. m^3/h	Koel- opp. m^2	Inw. vol. dm^3	Gewicht	Aantal	Diam. mm	Vermogen W* nom. opgenomen 230/1 400/3	Worp m	Geluids- niveau dB(A)	Kabel- invoer wartels
PX 1-7	1.4	1.2	1000	5.7	1.7	17	1	254	30/80 30/65	10	48	2 x M20 x 1.5
PX 2-7	2.9	2.5	2000	11.5	3.4	33	2	254	30/80 30/65	10	51	2 x M20 x 1.5
PX 3-7	4.5	3.9	3000	17.2	5.1	50	3	254	30/80 30/65	10	53	2 x M20 x 1.5
PX 4-7	6.0	5.2	4000	23.0	6.8	66	4	254	30/80 30/65	10	54	2 x M20 x 1.5
PX 5-7	7.4	6.4	5000	28.7	8.5	73	5	254	30/80 30/65	10	55	2 x M20 x 1.5
PX 6-7	8.8	7.7	6000	34.5	10.2	90	6	254	30/80 30/65	10	56	2 x M20 x 1.5

* Vermogen per motor. Het opgenomen vermogen van de ventilatoren is een laboratoriumwaarde gemeten bij een omgevingstemperatuur van 20°C .
Afhankelijk van de condities ter plaatse dient men rekening te houden met mogelijke afwijkingen.

Afmetingen